



HENHAM
PARK

WEDDINGS



ABOUT HENHAM PARK

The family estate is rich in history and has been owned and cared for by the Rous family since 1544. The ancient oak tree Sir John Rous hid in to escape Oliver Cromwell's Roundheads still lives and is part of the fabric of the landscape which extends over one of the largest listed parklands in the country.

Nowadays the estate is actively managed by Hektor Rous and his wife Sarah who have made it their home with their two children. The estate supports arable farming, livestock grazing, forestry alongside its carefully protected natural habitat for English flora and fauna and is the famous home of Latitude festival and the Henham Steam Rally.







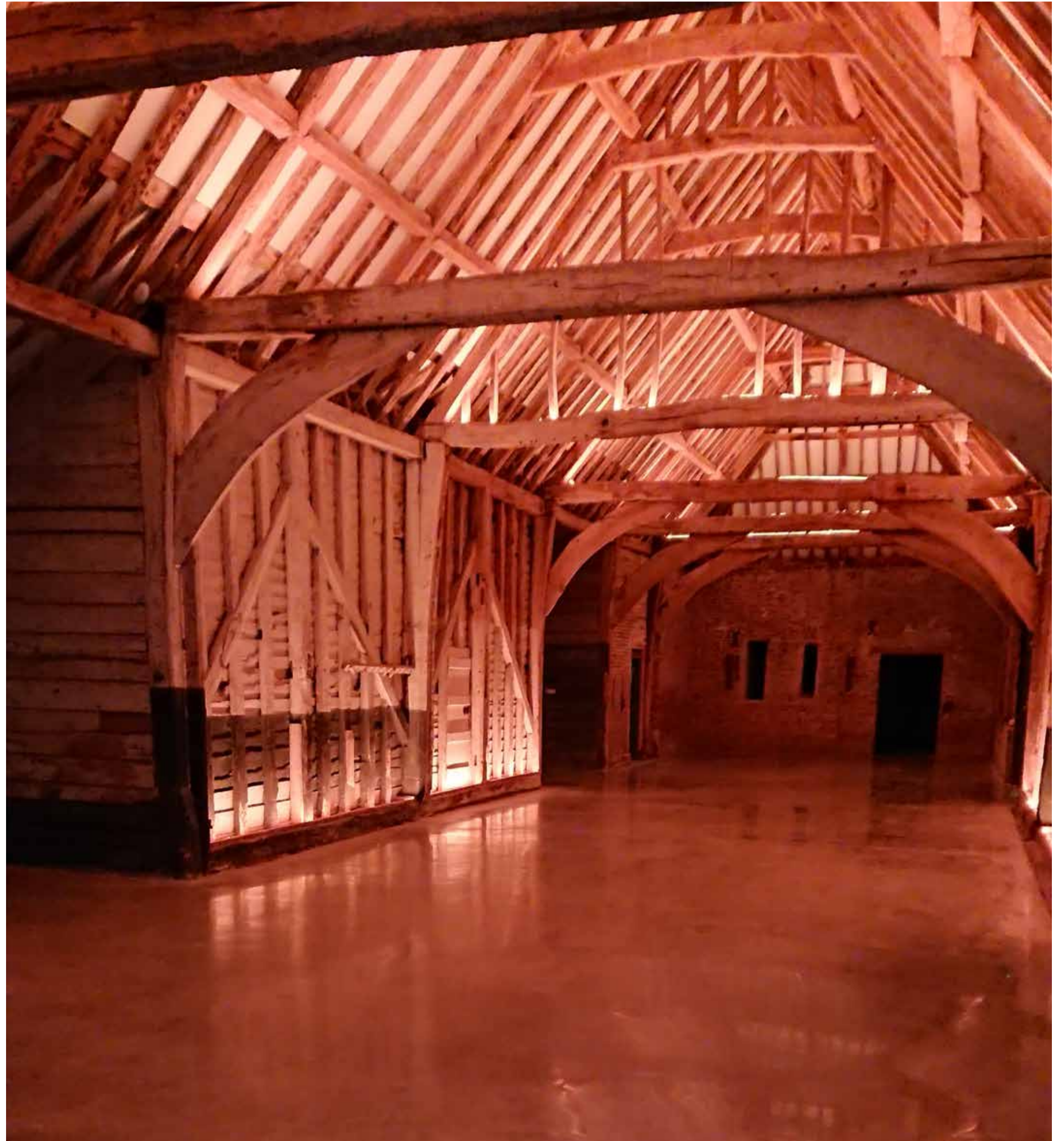
HENHAM BARN

Henham Barns is a unique venue for your special day and has been designed to be as flexible as possible to ensure that you can create your wedding exactly as you wish. We encourage you to make it our own for the weekend and add a highly personal touch. For example you are welcome to choose whichever caterer you desire, whether that is street food or a formal three course wedding breakfast. There is no corkage charge or hidden costs. We allow access from Friday at 9am until 5pm on Sunday to allow you the time to create your day exactly as you please.

The Barns are blessed with a wonderful location, within the tranquillity and peace of the listed Henham Park and approached from the A12 along a long lime avenue. Ten minutes away is beautiful Southwold and the Sunrise Coast. The Barn's Suffolk oak beams and red brick walls have been sensitively restored and updated with the best of modern technology, including underfloor heating and colour changing LED lighting, wireless speakers and the option of using a large projector screen and microphones for speeches or photos.

Our ethos has been to make sure that the building still has the qualities and character of a barn, but with all the comfort and innovation you might need.

The main areas within the barn complex are fully licensed for wedding ceremonies of all sizes.







PARKLAND WEDDINGS

Should your dream wedding include views over Henham Park we can offer you a choice of outdoor locations. We simply provide the beautiful scenery and one of our custom made stretch tents and allow you to create your perfect wedding. There is a choice of stunning outdoor locations for your marquee. These include:

HENHAM LAKE

We can install our stretch tent right next to the 11 acre Repton designed lake. Beautiful sunsets occur over the wide span timber bridge, which can be used for drinks receptions or a lakeside ceremony. Your guests will enjoy a dramatic entrance driving through the archway house known as High Lodge.

WALLED GARDEN

Henham Park has a secret hidden 17th century listed, red brick walled garden. One of the lengths is known as a crinkle-crankle (or serpentine) wall and at 110m is one of the longest in Europe. The grass in the walled garden is perfectly mowed and flat. There are four wooden gates and two enormous wooden gates topped with finials. Just outside the walled garden is the last remaining part of Henham Hall, featuring double columns and a hunting fresco.

BLUEBELL WOODS

During the month of May an area of Henham Woods become a carpet of purple bluebells. A tranquil setting for a fairy lit woodland wedding.

PRISTINE PARKLAND

Within the 3,500 acre Henham estate, there are 800 acres of rolling parkland. Parts are planted with majestic oak, lime and horse chestnut trees. Some of the oak trees are the oldest in Europe with girths of 9m or more. Gravel drives undulating within the landscape provide access for your wedding guests and suppliers.









WEDDING COSTS

Hire is for three days to create your own beautiful wedding dream and have plenty of time to enjoy it. Should you wish to hold your ceremony at Henham Barns (as well as your reception) there is no extra charge.

HENHAM BARNES

Off peak (*Oct-April*): £4,250 inc. VAT

Peak (*May-Sep; Bank holidays*): £5,950 inc. VAT

Prices include heating, electricity, water and fully equipped luxury toilet facilities.

There is no Corkage charge at Henham Barns.

You also have free use of our banquet and round tables and our limewashed chivari wedding chairs.

LAKE & WOODS OR WALLED GARDEN

Ground hire and stretch tent supplied: £7,200

BESPOKE WEDDINGS

Custom boutique wedding options are our speciality.

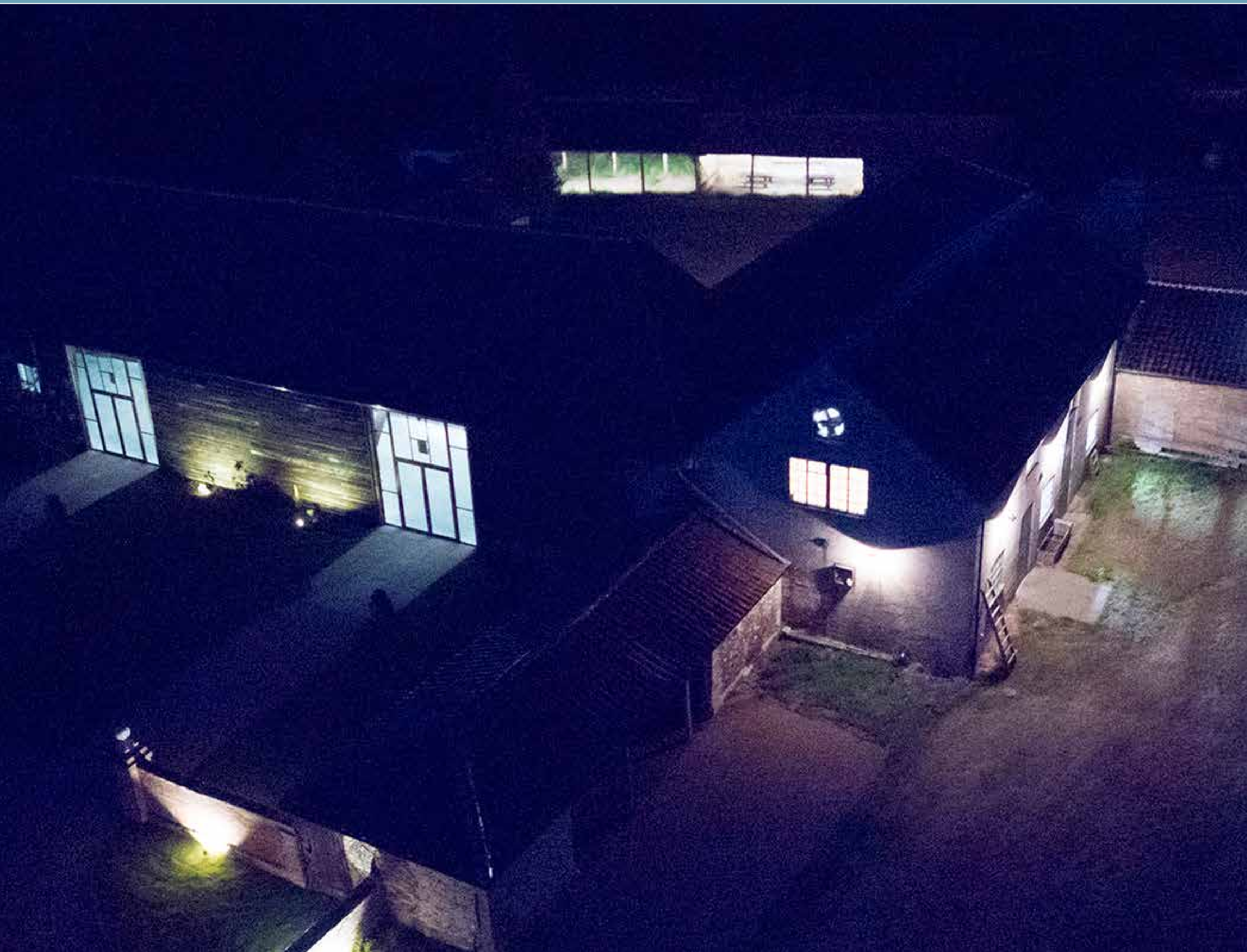
Email: hektor@henhampark.com

OPTIONAL PROJECTOR SCREEN

The retractable projector screen is a brilliant way to show photos and for speeches but also can act as a reveal for the dance floor or band. It comes with a wireless microphone to make speeches easier and can project an image 3.5m wide by 2.2 meters high. The projector is complimentary, however we require that you hire our technician to ensure safe and effective operation of the equipment. The cost of the technician is £200.



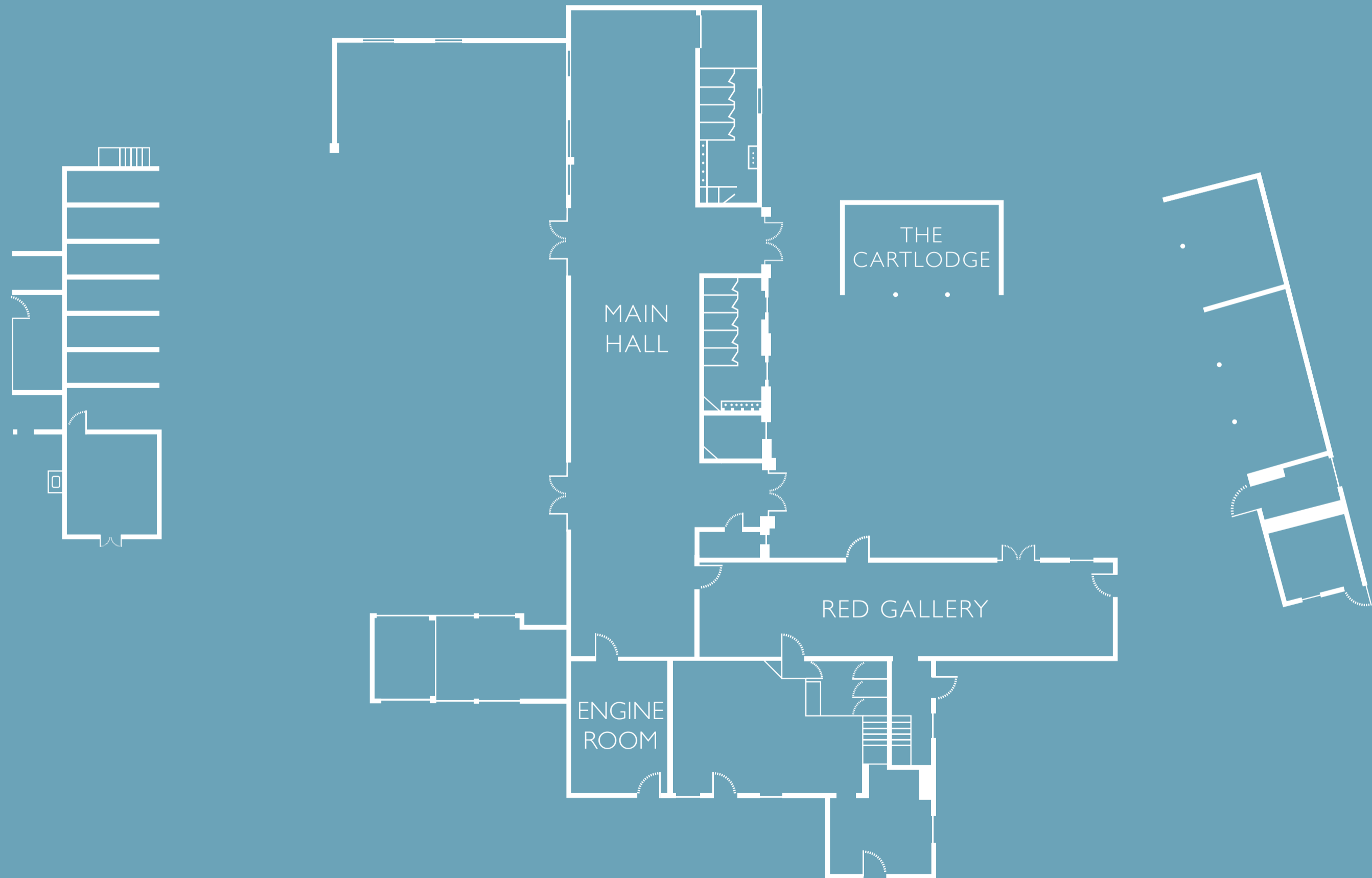








THE FLOORPLAN



HENHAM BARNs

The Barns are composed of several interconnected spaces:

INDOOR SPACE

Main Barn

- 34m long x 7m wide
- Licensed for 283 seated guests for wedding ceremony
- Seats 260 for wedding breakfast
- Ancient oak beams with Suffolk red bricks
- Underfloor heating
- Power floated concrete floor
- Colour changing full spectrum LED lighting
- Uplighters for walls and across beams
- Double height & width custom made glass doors
- Original features retained from historical use as granary barn

Red Gallery

- 22m long x 5m wide
- Licensed for 159 seated guests for wedding ceremony
- Seats 150 for wedding breakfast
- Exposed timbers and Suffolk red bricks
- Underfloor heating
- Power floated concrete floor
- Colour changing full spectrum LED lighting
- Uplit timbers
- Wooden panelling
- Custom made glass doors and windows
- Original features retained from historical use as dairy barn

The Cartlodge

- Licensed for 56 seated guests for wedding ceremony

Engine Room

- 7m long x 5m wide
- Frosted warm white glow fairy bulb lights
- Central pole
- Original features retained from historical use as granary barn
- Painted Henham grey floor
- Custom built hidden speakeasy bar
- Mobile bar top

Kitchen

- 6m long x 15m wide
- 64 amp electricity points
- Commercial dishwasher
- Two double commercial fridges
- Extra small freezer for ice
- Double sinks, one with extendable tap rinser
- Portable trolley
- Wire racks for plating

OUTDOOR SPACE

Courtyard

- Sheltered and mostly enclosed, with access to both the Main Barn and the Red Gallery.
- Grass
- Two open fronted cartsheds with ambient lighting
- Original well
- Boutique outdoor seating

Reception area

- South facing grass in front of entrance to Barns
- Carriage sheds with ambient lighting







[NEXT PAGE >](#)

WHERE TO STAY

Stunning accommodation in the beautiful Suffolk countryside, perfect for guests to stay to celebrate your special day.

PARK FARM HOUSE

If it is available, we recommend that you hire Park Farm house for your wedding party. It is a beautiful Georgian house sleeping 15 guests, with a beautiful staircase for bridal photos. The house is situated next to the barns and can be rented through Suffolk Secrets.

www.suffolk-secrets.co.uk/parkfarmhouse

THE STABLES

The 18th century converted stable block is run as a B&B and sleeps up to 13. Beautifully restored this listed building features incredible vaulted ceilings, oak beams and Suffolk Red bricks.

www.stablesathenhampark.com



[< PREVIOUS PAGE](#)

HOLIDAY COTTAGES

Why not stay in one of our beautiful new holiday cottages?
Located on the iconic Henham Park and only a short drive from
England's favourite seaside town and beach at Southwold.

LONG RANGE ONE

Living

- Open plan living and dining area
- Sofa bed with bedding
- Free Wifi

Dining

- Dining table and four dining chairs
- Kitchen with oven and single ring induction hob
- Kettle & toaster

Bedroom

- Super King Size Bed with linen and towels provided

Wet room/Bathroom

- Large sink with double drawers
- Walk in shower and travertine flooring
- Shaver Point

LONG RANGE TWO

Living

- Open plan living and dining area
- Queen size sofa bed with bedding
- Free Wifi

Dining

- Dining table and four dining chairs
- Kitchen with oven and single ring induction hob
- Kettle & toaster

Bedroom

- Double bed with linen and towels provided

Wet room/Bathroom

- Large sink with double drawers
- Walk in shower and travertine flooring
- Shaver Point

£150 per night with a two night minimum stay

TO CHECK AVAILABILITY AND BOOK
PLEASE EMAIL HEKTOR@HENHAMPARK.COM

NEXT STEPS...

1. Should you have any questions or wish to come for a viewing please contact us directly by email weddings@henhampark.com
2. Call Suffolk Registrars to enquire about available times for your ceremony to be conducted.
3. Take a look at our [Instagram @henham_park](#) and our Pinterest barn wedding inspiration board: [Henham Park](#)



